



# NYC 2024 PHRF, MULTI-HULL, AND ONE-DESIGN

## WEDNESDAY NIGHT SERIES

### Newport Yacht Club

22 May 2024 to 28 Aug 2024

Newport, RI, USA



## SAILING INSTRUCTION

### 1 RULES

- 1.1 The event is governed by the rules as defined in *The Racing Rules of Sailing (RRS)*.

### 2 CHANGES TO SAILING INSTRUCTIONS

- 2.1 Any changes to the SI will be posted on the Regatta bulletin board located at the NYC and on the NYC website [<http://www.newportyachtclub.org>] at least five (5) days before they are to take effect

### 3 COMMUNICATIONS WITH COMPETITORS

- 3.1 All Boats should **carry a VHF radio** capable of communicating on Channel 16 (safety & emergency) & Channel 73 (race committee).
- 3.2 On the water, the Race Committee intends to monitor and communicate with competitors on VHF radio **Channel 73**.

### 4 SIGNALS MADE ASHORE

- 4.1 Signals made ashore will be hoisted on the flagstaff at NYC and broadcast on VHF radio Channel 73.

- 4.2 Every effort will be made by the Race Committee to post signals ashore by 5:00 pm (1700).

- 4.3 Abandon Races: Code flags "N" over "A" coincident with 3 sound signals means "All races are abandoned, no more racing today."



- 4.4 Postpone Races: Code flag "AP" coincident with 2 sound signals means races are postponed. When "AP" is displayed ashore '1 minute' to the Warning signal is replaced with 'not less than 60 minutes (1 hour)' to the Warning signal.



### 5 SCHEDULE OF RACES

- 5.1 The scheduled time of the Warning signal for the first race is 6:00 pm (1800).

- 5.2 To alert boats that a race or sequence of races will begin soon, the orange starting line flag will be displayed with one sound at least five minutes before a warning signal is made.



- 5.2 The Race Committee reserves the option to run additional races. To indicate additional races, code flag "R" (Romeo - yellow cross on red square) will be displayed on the Race Committee boat before the first boat in a class finishes. The


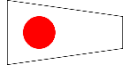

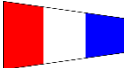




# NYC 2024 PHRF, Multi-hull, & One-design (non-spinnaker), Wednesday Night Series Sailing Instructions

class designator for the class (or classes) for which an additional race is being run will be posted on the course board on the starboard side of the Race Committee boat.

## 6 CLASS FLAGS

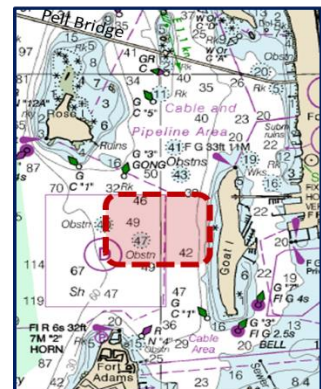
6.1 The class flags are:

Class	PHRF Rating	Course Board Designator	Class Flag
Class IV ( <i>Multihulls</i> )	n/a	IV	 Pennant 4
Class I	Spinnaker	I	 Pennant 1
Class II	Non-spinnaker, below 190	II	 Pennant 2
Class III	Non-spinnaker, 190 or above	III	 Pennant 3
<i>J/22</i> ( <i>Sail Newport Charter Fleet</i> )	n/a	J22	
Ensign	Non-spinnaker	*E*	

## 7 RACING AREA

7.1 Races are conducted on Narragansett Bay, East Passage.

7.2 In general, the starting area is in the vicinity west of Goat Island and north of Fort Adams (vicinity of buoy "A" as indicated on the Sail Newport [South Bay Race Chart](#) – update expected Spring 2024).



**NYC 2024 PHRF, Multi-hull, & One-design (non-spinnaker), Wednesday Night Series  
Sailing Instructions**

**8 COURSES**

8.1 Courses are selected from the established list of courses defined on the South Bay Race Chart published by Sail Newport (update expected Spring 2024).

*An electronic .PDF copy is available at the Sail Newport website  
[<https://sailnewport.org>] under "Regattas".*

8.2 No later than the Warning signal of the first race, the Race Committee will post the courses for each class on the starboard side of the Race Committee boat and may make an announcement over VHF channel 73.

8.3 Information for each class is posted top to bottom, left to right. That is, the course number is below the class designator. The sequence for class starts is read left to right.

8.4 A number in parentheses below a course indicates the number of laps to be sailed, one (1) being understood. For example, a number two in parentheses (2) under a course number indicates that the entire course is to be sailed twice around.

8.5 Race Committee will make every effort to select courses that allow for participants to finish and return to port prior to sunset.

**9 MARKS**

9.1 Marks are a combination of government and special marks as described on the South Bay Race Chart published by Sail Newport.

**10 OBSTRUCTIONS**

10.1 The following areas are designated as obstructions:

- a) the area of *The Dumplings* or between those rocks and Jamestown shore
- b) the rock near Fort Wetherill and the Jamestown shore
- c) *Citing Rock* east of Rose Island

10.2 Competitors shall not sail between Rose Island and the Newport (Pell) Bridge.

10.3 Competitors shall pass under the Newport (Pell) Bridge only through the center span.

10.4 The start/finish line is an obstruction except when starting or finishing. **Once a boat properly starts, she shall not sail through the start/finish line** other than to finish unless the start/finish mark is also a mark of the course.

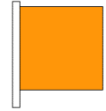
**11 THE START**

11.1 The order for each Class start will be posted on the course board as described in paragraph 8. It will typically be the same order as noted in paragraph 6.1, but may be modified by the Race Committee.

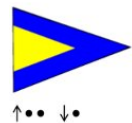
11.2 Starting signals will be made in accordance with the RRS 26 (Starting Races).

# NYC 2024 PHRF, Multi-hull, & One-design (non-spinnaker), Wednesday Night Series Sailing Instructions

- 11.3 The Race Committee intends to conduct **rolling starts**, whereby the Start of one class will be concurrent with the Warning for the next class.
- 11.4 Two or more classes may be started at the same time. Multiple class flags will be displayed as the Warning signal in this case.
- 11.5 The start line is between the orange flag on the Race Committee boat at the starboard-end and the course side of the port-end starting mark.

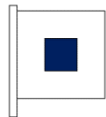


- 11.6 **Boats in a class whose warning signal has not been made shall keep clear of the starting area during the starting sequence for other races.**
- 11.7 A boat that does not start within **4 minutes** after her starting signal will be scored *Did Not Start* (DNS) without a hearing. This changes RRS A5.1 and A5.2.
- 11.8 Two or more boats of the same class must start within their time limit for a race to be scored for that class.
- 11.9 RRS 29.2 (**General Recall**) is amended as follows: A recalled class will restart after all subsequent classes in the original starting sequence. The Warning for the recalled class will be concurrent with the Start of the last class in the original starting sequence (in other words, the rolling start continues). If there is more than one general recall, class order will be maintained.



## 12 FINISHING

- 12.1 The finish line will be between the blue flag displayed on the Race Committee boat at the starboard-end and the course side of the port-end starting mark.
- 12.2 When a course is shortened the finish line will be between an orange flag on the Race Committee boat and the nearby mark. A shortened course is indicated when code flag "S" (Sierra – white with blue square) is displayed on the Race Committee boat accompanied by two (2) sound signals.



## 13 TIME LIMITS

- 13.1 The time limit for all classes is 30 minutes after sunset.
- 13.2 Any boat that finishes more than 30 minutes after the first boat in its class that sails the course and finishes, or more than 30 minutes after sunset, whichever comes first, will be scored DNF (Did not finish) by the Race Committee without a hearing. This changes RRS A5 (Scores Determined by the Race Committee).

## 14 HEARING REQUESTS

- 14.1 A protesting boat shall comply with RRS 61.1 (Informing the Protestee) and shall notify the Race Committee of their intent to protest upon finishing the race in which the incident occurred.

**NYC 2024 PHRF, Multi-hull, & One-design (non-spinnaker), Wednesday Night Series  
Sailing Instructions**

- 14.2 Protests shall be filed at NYC no later than 2100 (9:00 pm) on the day after the race. Protest forms are available at NYC or on the US Sailing website. Protestors may deposit completed forms in the Regatta Committee box located in the hallway on the NYC first floor or email them to: [Regatta@NewportYachtClub.org](mailto:Regatta@NewportYachtClub.org)

**15 SAFETY REGULATIONS**

- 15.1 **Checking In:** Each boat shall sail by the Race Committee boat before their Preparatory signal to hail her sail number, the class in which she will race, and her Team Name if applicable. Each boat shall receive acknowledgement from the Race Committee.
- 15.2 **Withdrawal:** Boats withdrawing from a race shall inform the Race Committee as soon as practicable either directly or on VHF Channel 73. Any boat unable to contact the Race Committee directly shall report its withdrawal to the NYC Dock Office (Tel: 401-846-9410) and ask to have the information relayed to the Race Committee.
- 15.3 **PFD Requirement:** In accordance with Rhode Island law children under 13 years of age shall wear a USCG approved personal floatation device (PFD) whenever they are aboard a boat unless they are below decks or in an enclosed cabin.
- 15.4 **Large Commercial Vessel Traffic:** Narragansett Bay is a restricted waterway for commercial traffic. The U.S. Coast Guard (USCG) informed all area race committees that incidents occurred wherein racing yachts came too close to vessels with limited maneuverability and which can only navigate safely within the designated channel. **The USCG will sanction any area clubs whose events result in these incidents.**

Therefore, a **racing yacht shall keep clear of commercial vessels operating in navigation channels.** [*See Amalgamated International & U.S. Inland Navigation Rules 9(b): "A... sailing vessel shall not impede the passage of a vessel that can safely navigate only within a narrow channel or fairway."*]

A racing yacht whose actions result in a danger signal of 5 or more short horn blasts from a commercial vessel (meaning "I do not understand your intentions" or "You are not taking sufficient action to avoid collision") will be protested by the race committee or protest committee. The protest committee may, at its discretion, impose a penalty for breaking this rule up to disqualification that is not excludable (DNE) from one or more races. This changes RRS 64.2.

Additionally, for egregious or repeat offenders of this rule, the protest committee may consider filing a RRS 69 report.

- 15.5 Racers must comply with any direction provided by the USCG, Harbor Master, other on-the-water law enforcement, or the NYC Race Committee.

**NYC 2024 PHRF, Multi-hull, & One-design (non-spinnaker), Wednesday Night Series  
Sailing Instructions**

**16 RISK STATEMENT**

- 16.1 RRS 3 states: 'The responsibility for a boat's decision to participate in a race or to continue racing is hers alone.' By participating in this event each competitor agrees and acknowledges that sailing is a potentially dangerous activity with inherent risks. These risks include strong winds and rough seas, sudden changes in weather, failure of equipment, boat handling errors, poor seamanship by other boats, loss of balance on an unstable platform and fatigue resulting in increased risk of injury. **Inherent in the sport of sailing is the risk of permanent, catastrophic injury or death by drowning, trauma, hypothermia or other causes.**
- 16.2 The OA accepts no liability for material damage or personal injury or death sustained in conjunction with, prior to, during, or after the series.

**17 FURTHER INFORMATION**

- 17.1 For further information please contact the Newport Yacht Club Regatta Committee via email at [regatta@newportyachtclub.org](mailto:regatta@newportyachtclub.org).